



With more than 25 years of experience in the industry, Brian Carabet and John Shand are drawn to creating spectacular publications for discerning readers. The founders of Panache Partners have produced upward of 100 books and continue to redefine what it means to create sophisticated publications.

*21st Century Homes* is part of a popular collection depicting high-end residential and commercial architecture across the United States, Canada, and the United Kingdom. Dozens of regional editions of the *Dream Homes*, *Perspectives on Design*, and *City by Design* series have been published. A brilliant counterpoint to *21st Century Homes*, the book *Visions of Design* features residential designs by North America's leading interior designers, who collaborate with professional architects to achieve the desired results.

Panache Partners' body of work also includes a number of *Spectacular Homes* and *Interiors* titles, which showcase various regions' finest interior designers. *Spectacular Wineries*, *Art of Celebration*, *Spectacular Golf*, and *Experience* further complement the publisher's impressive array of titles in the luxury lifestyle genre. Panache Partners' critically acclaimed collections have far-reaching audiences as a result of domestic and international distribution and circulation.

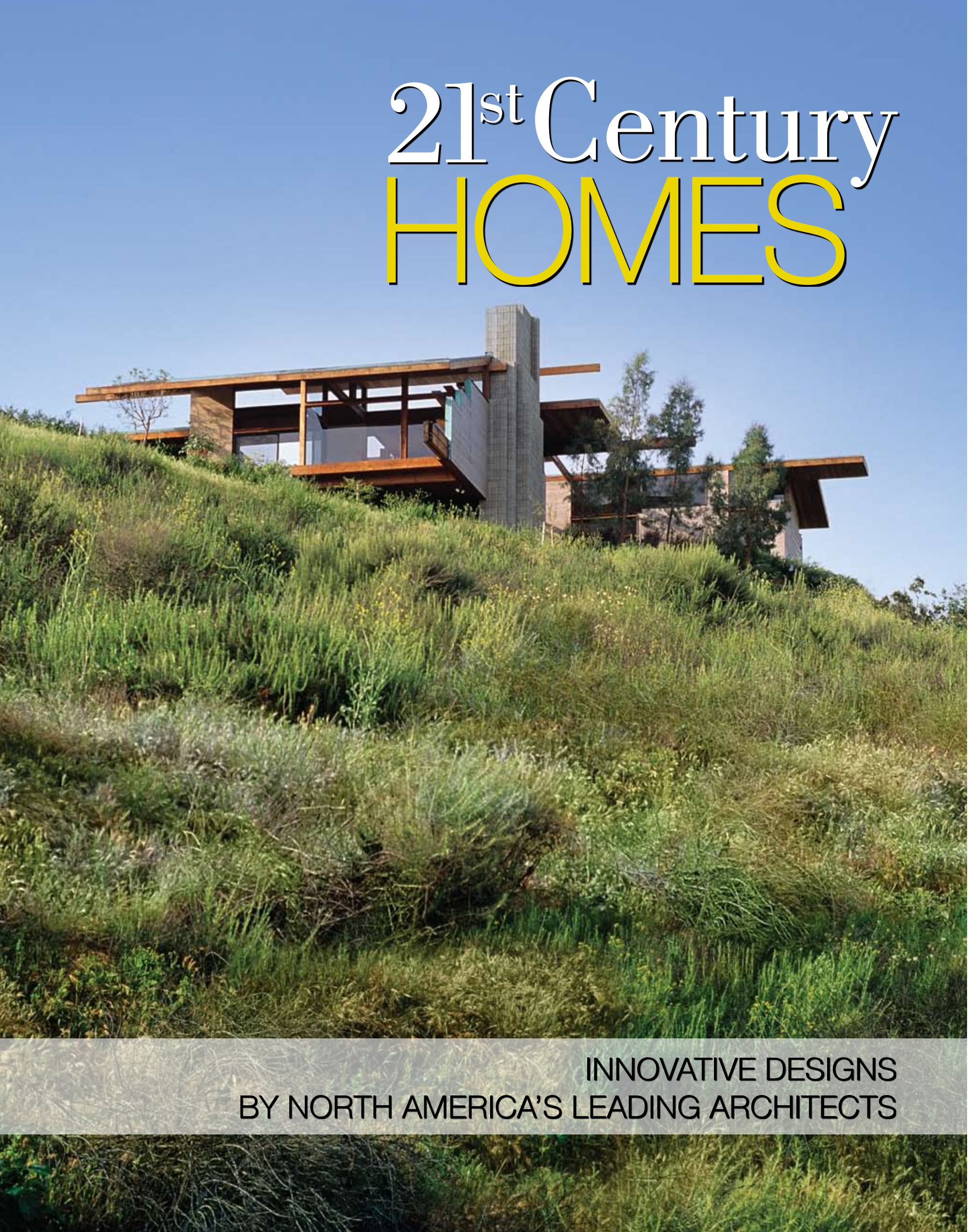
*Front cover and front flap photographs by Kim Brun Photography  
Back cover and above photographs by John Durant*



Norm Applebaum Architect AIA  
Norm Applebaum, AIA  
9830 Edgelake Drive  
La Mesa, CA 91941  
619.463.1867  
www.normapplebaum.com

21<sup>st</sup> Century  
HOMES

A FINE BOOK BY  
PANACHE



# 21<sup>st</sup> Century HOMES

INNOVATIVE DESIGNS  
BY NORTH AMERICA'S LEADING ARCHITECTS



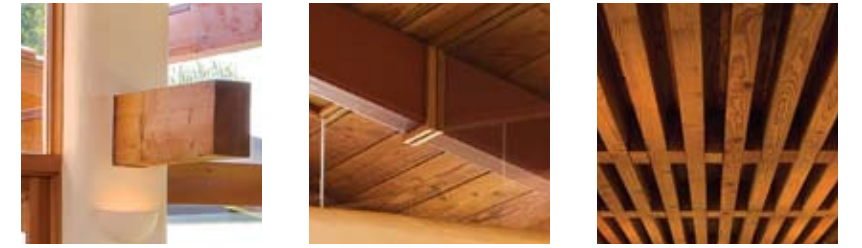
Presenting hundreds of ingenious designs across North America, *21st Century Homes* is an unprecedented compile of luxurious primary residences and vacation proper envisioned by award-winning architects. Some of the creators are wholeheartedly dedicated to preserve the language of classical architecture while others are boldly defining new contemporary styles; between these extremes you'll discover plenty who are designing buildings that are rooted in the past yet sustainably focused on the future.

Featured within this monumental collection of nearly 70 of the most prominent architects in the United States and Canada are the memorable designs of Southern California-born Norm Applebaum Architect AIA. For more than three and a half decades, Norm has focused on creating brilliant modern residences, yet he also engages in select high-profile additions and renovations. Though Norm's portfolio is incredibly diverse, all of his work is united by a thread of timelessness; each building is designed specific to the site and locale, engineered to endure for generations, crafted of beautiful materials, infused with natural light. He is considered by many to be a great artist, musician, and San Diego's finest architect.

Every turn of the page reveals insightful captions and stunning photographs that speak to the soul. Spanning diverse, culturally rich regions, from the West Coast to the Rockies, Midwest, Deep South, and the Eastern Seaboard, the selection of dream homes is as unique as the people who commissioned them. Meticulously edited to illustrate variety in style, location, and creative approach, *21st Century Homes* fully explores what it means to live in this age of architectural greatness.



# NORM APPLEBAUM ARCHITECT AIA







ABOVE: A nod to Cliff May, father of the Southern California ranch house, the quintessential ranch home enjoys 180 degree views, and its west facing living room has deep overhangs to block the intense setting sun. A massive wooden beam pierces through the structural supporting column extending outside, reiterating a seamless indoor-outdoor experience.

FACING PAGE: A strong blend of Douglas fir beams, Mexican tiled floors, and glass windows is softened by white contoured "pillow" walls invented by the architect. The cantilevered steel beamed roof virtually floats over glass. Upon entering the foyer, guests can appreciate gallery niches displaying the residents' primitive art collection.

PREVIOUS PAGES: In California's San Diego County, the ranch style home reigns supreme. Young succulent landscape leads the way to the sprawling structure perched atop a Fairbanks Ranch property with boulder studded hills to the north and former pastureland to the east. The architecture defines a profusion of wood timbers, providing an experience akin to living under majestic trees. *Photographs by John Durant*







ABOVE & RIGHT: Wood plank-and-beam ceiling elements dominate. The fireplace faces the breakfast nook and anchors the kitchen as the heart of the home, while a sliding pocket door framed with twig slats cleverly separates the kitchen pass through from the dining room. Deceivingly, walls are only seven feet high, but clerestory glass above gives a feeling of an extension of space looking out to mature trees and awe-inspiring vistas.

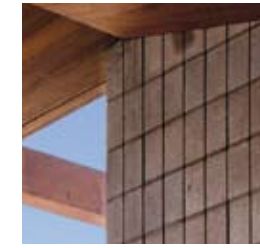
FACING PAGE: Everywhere you walk there's a focal point and a view. The gallery leading to the guest wing and offices is flanked by French doors leading to the swimming pool at one side and entry garden on the other. A four by four, self spaced wood ceiling trellis creates texture and defines the gallery, and inset lighting in the Saltillo tiled floors adds drama at night. Indigenous Douglas fir was used throughout the home.

*Photographs by John Durant*





# NORM APPLEBAUM ARCHITECT AIA







ABOVE, LEFT & FACING PAGE: In the living room one sees a cantilevered steel beam beyond and elevation changes in the redwood ceiling planes; lines of posts support the ceiling structure. In the evening, the clear heart redwood ceiling above the clerestories seems to float in space as roof planes are lit with indirect lighting. The homeowners' rare African art collection grounds the airy interior. Selected to be mindful of the budget while offering aesthetic value, ribbon-grained mahogany cabinets with laminate countertop surfaces create an elegant and timeless look in the kitchen. Use of knotty white pine flooring recalls the couple's historic Colonial home in Alexandria, Virginia.

PREVIOUS PAGES: The home redefines sustainable architecture through its connectivity with the land and nature as well as its aesthetically green construction. Indigenous wood, glass, and raw steel elements resemble a Mondrian painting. Designed for the former U.S. Ambassador to Swaziland, Richard C. Matheron, and his wife Katherine, the residence looks north toward the San Pasqual Valley and San Diego Wild Animal Park. Symbolizing freedom, the abstract design of "Wings" was inspired by the red-shouldered hawks that glide into the wind below the structure. The house was unfortunately lost to the Southern California wildfires in 2007, but its spirit inspired an entirely new green design that has since been erected on the land. *Photographs by Kim Brun*







LEFT: What appears to be a skyscraper is really a chimney that scales one side of the home rising up 25 feet. An Applebaum innovation, exposed concrete blocks stacked with reinforced steel allow the structure to cantilever back into the chimney mass for seismic stability of the architecture.

*Photograph by Norm Applebaum*

FACING PAGE: The residence is a modern expression of sophisticated simplicity with sensitivity to the environment. Integrating cedar siding, exposed steel, oiled redwood ceilings, Douglas fir beams, concrete masonry, and a galvanized steel roof with copper emulsion paint, the contemporary nest epitomizes an eco-sensitive vision.

*Photograph by Kim Brun*